

ULTRA HIGH EFFICIENCY CENTRIFUGAL BLOWERS

PAXTON PX-SERIES

33% more air flow than a standard 20 hp blower

Blower efficiencies as great as 80%

MORE POWER

The PX-2000 generates as much as 1500 cfm of air flow, with its 20 hp motor. Compare this with only 1125 cfm of air flow with a typical 20 hp centrifugal blower.



LESS ENERGY

The PX-1500 uses a 15 hp motor, but generates as much air flow as a standard 20 hp blower. That means you'll save over \$2000 in electrical costs annually – 25% of the operating cost!

MORE EFFICIENT

The PX-series generates less heat, turning more energy into air power.

- Less Heat = More Air Power
- Less Heat = Longer Blower Life
- Lower energy use per cfm of air



10125 Carver Rd. Cincinnati, OH 45242

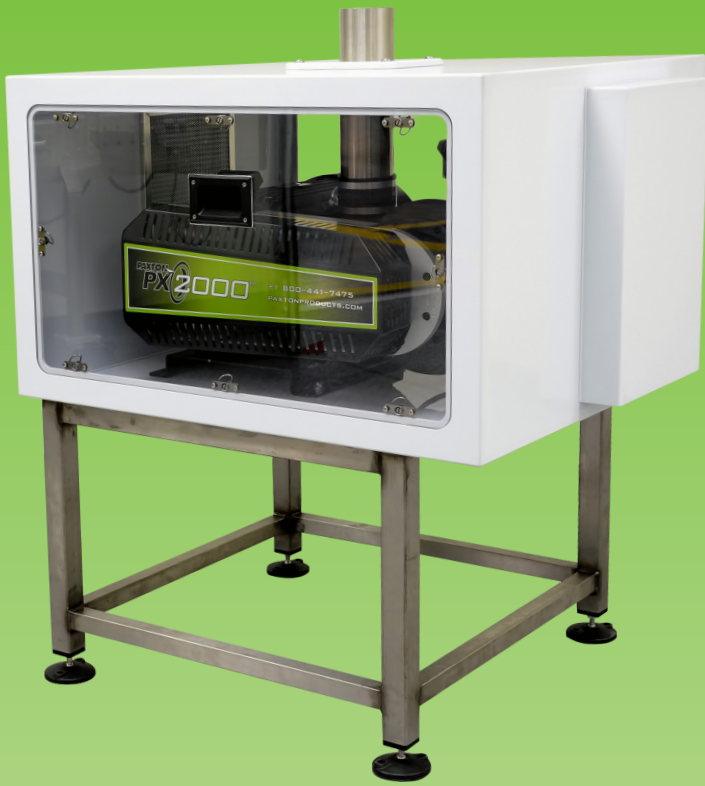
Toll Free: 800.441.7475

Phone/Fax: 513.891.7475

sales@paxtonproducts.com

www.paxtonproducts.com





Premium Efficiency Motor Options

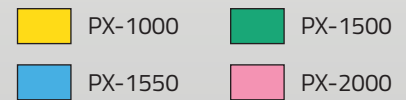
NEMA	60 Hz, 230 / 460 V, 3 phase
NEMA	50 Hz, 190 / 380 V, 3 phase
NEMA	60 Hz, 575 V, 3 phase
IEC	50 Hz, 400 V, 3 phase

Operating Temperatures

Ambient	≤ 105 °F	≤ 40 °C
Intake Air	≤ 120 °F	≤ 49 °C

	PX-1000		PX-1500		PX-1550		PX-2000	
POWER ▶	10 hp	7.5 kW	15 hp	11 kW	15 hp	11 kW	20 hp	15 kW
MAXIMUM EFFICIENCY ▶	73 %		74 %		75 %		76 %	
MAXIMUM OUTPUT ▶	1000 cfm @ 36 inH ₂ O	1699 m ³ /hr @ 89 mbar	1350 cfm @ 31 inH ₂ O	2294 m ³ /hr @ 77 mbar	1050 cfm @ 63 inH ₂ O	1784 m ³ /hr @ 157 mbar	1500 cfm @ 35 inH ₂ O	2548 m ³ /hr @ 87 mbar
MAXIMUM POWER ▶	600 cfm @ 73 inH ₂ O	1020 m ³ /hr @ 181 mbar	1100 cfm @ 52 inH ₂ O	1869 m ³ /hr @ 129 mbar	950 cfm @ 73 inH ₂ O	1614 m ³ /hr @ 181 mbar	1150 cfm @ 78 inH ₂ O	1954 m ³ /hr @ 194 mbar
WEIGHT ▶	210 lbs	95 kg	235 lbs	107 kg	245 lbs	111 kg	410 lbs	186 kg

PX-2000 blowers extend the performance range replacing many 25hp and even some 30hp blowers



Inches of H₂O

